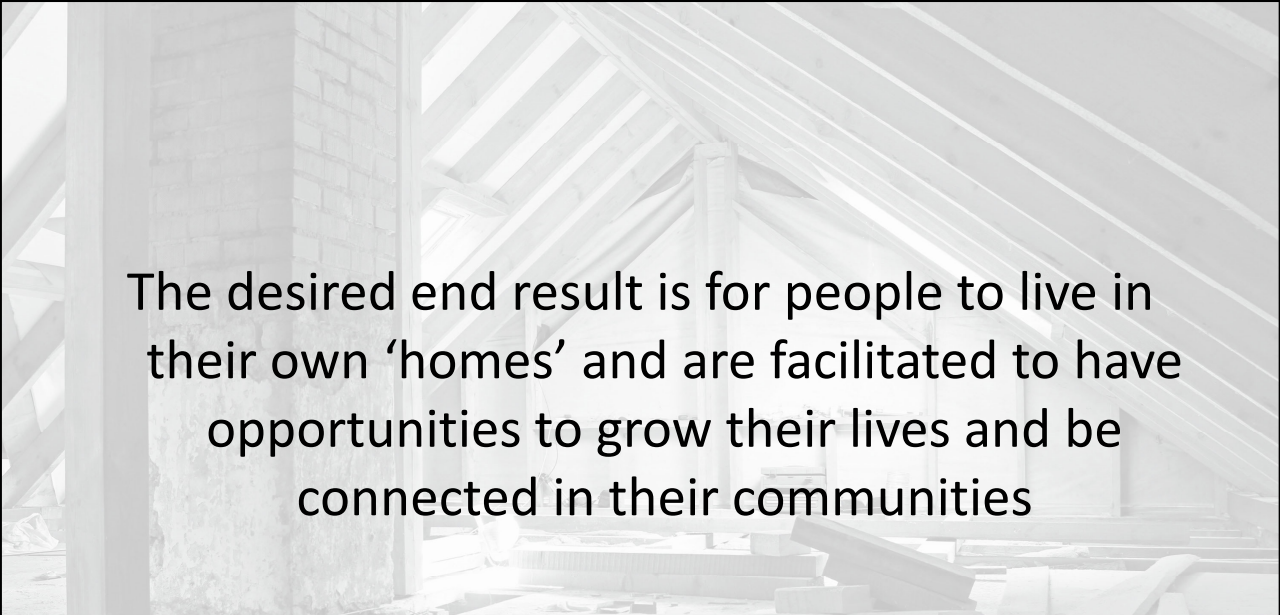


Time To Move On (TTMO)

- Published in 2011
- The model envisages that people living in congregated settings will move to dispersed forms of housing in ordinary communities, provided mainly by housing authorities.
- They will have the same entitlement to mainstream community health and social services as any other citizen, such as GP, home help etc.
- People will get the supports they need to help them to live independently and be part of their community

Time to Move On

- The picture that emerged in the course of the work done for this report is one of a group of people who live isolated lives apart from any community and from families, many experience institutional living conditions where they lack basic privacy and dignity.



The desired end result is for people to live in their own 'homes' and are facilitated to have opportunities to grow their lives and be connected in their communities

How do we get there?

- HSE Capital
- Social Reform Fund
- CAS Ring Fenced Funding
- Separation of housing provision from support services

Capital & Service Reform Funding

- DOH allocated dedicated capital funding of €100million for disability services over the period 2016–2021, to support people moving into community from congregated settings .
 - Of this, €20million is identified for acquisition and adaptation of properties during 2016.
 - Accommodation must adhere to principles in TTMO policy
- Also,
- Establishment of a €45million Service Reform Fund for 2015-2017 has been agreed between Atlantic Philanthropies, the DoH, HSE Social Care and Mental Health Services and Genio, which will support the phased transition to person-centred models of services and supports over 3 years.

Capital Assistance Scheme - Elements

- A core objective is to avoid the creation of mini-institutions for people with disabilities through the provision of community living choices
- Housing arrangements must be dispersed independent units similar to other apartments and houses and scattered throughout mixed residential neighbourhoods amongst the rest of the population. Campus-style housing, clustering or grouping of housing for people with disabilities, including those with mental health difficulties, will not be eligible for CAS funding
- 10 million ring fenced for TTMO

CAS Applications and HSE

- The HSE at a local level will have oversight of all such applications to ensure that inappropriate clusters are not developed, either by one provider or several providers operating in the same geographical area

Housing Provision and Support Services

- A key element of TTMO is the separation of Housing Provision from Support Services to maximise security of tenure for tenants and ensure choice into the future.
- AHB and Service Providers Partnerships are key to addressing this separation.

Housing and Support Services

- AHB will provide the house and be the landlord.
- Service provider will be the support service provider within the house.

The numbers....

- 2,631 individuals are currently living in congregated settings and with changes to population and progress in line with recent activity, there will still be around 1,880 people who require a housing solution between 2017-2021.
- That equates to a minimum of 470 houses (based on everyone choosing to live with three others!)
- There is money on the table which AHB's can access, the agencies will bring the day to day support service.



FINANCING

ICSH HOUSING FINANCE CONFERENCE

FOR DELIVERY & MANAGEMENT

#backedbyAIB

Irish Council
for Social Housing

Supported Housing Delivery

Turlough O'Brien CEO, Tinteán



Tinteán Overview



1992: Formed in Carlow by a group of Community activists

- ✓ General needs housing (38)
- ✓ Older person accommodation (24)
- ✓ Housing for people with disabilities (11)

Provided through

- ✓ New build
- ✓ Purchases
- ✓ Leasing

Tinteán Overview



Tinteán
Carlow Voluntary
Housing Association Ltd.

Funded by
Capital Assistance Scheme (CAS)
Capital Loan and Subsidy Scheme (CLSS – discontinued)
Capital Advance Leasing Facility (CALF)
Payment and Availability Agreements (P&A)

Private Finance – HFA Certified Body Status



CAS



Tinteán
Carlow Voluntary
Housing Association Ltd.

Set Rent (Currently €87 single, €102 couple.)
Tenant may be entitled to Rent Supplement from DSP
or Rental Assistance (RAS) from the Local Authority



Older Person Accommodation



Tinteán
Carlow Voluntary
Housing Association Ltd.

Radharc Oisín

Graiguecullen, Carlow Town

1995

12 units for the elderly

9 one bed units

3 two bed units

CAS funded



Older Person Accommodation



Tinteán
Carlow Voluntary
Housing Association Ltd.

Allocation Process

95% funded schemes

Council Nominations

Vacancies advertised

Applicants shortlisted

Applicants interviewed

Tenancy offered



Housing for people with disabilities

Working with

Delta Centre Carlow

Carlow County Council

St Patrick's Kilkenny



Tinteán
Carlow Voluntary
Housing Association Ltd.

delta centre 



CARLOW
COUNTY COUNCIL



Housing for people with disabilities

Carlow County Council
Housing and Disability Steering Group

National Housing Strategy for People with a Disability 2011 – 2016

A Vision for Change

A Time to Move on from Congregated Settings



Tinteán
Carlow Voluntary
Housing Association Ltd.



CARLOW
COUNTY COUNCIL

Housing for people with disabilities



Tinteán
Carlow Voluntary
Housing Association Ltd.

Housing Model

Community based living
Maximum independence and choice
Person centred plans
Supporting the individual
A home from home
4 – 6 persons with a house parent



Acquisitions

Tinteán Dara

Tinteán Carraig

Tinteán Rua

Tinteán Eala

CAS funded



Tinteán
Carlow Voluntary
Housing Association Ltd.



Acquisitions

Adaptations

Specialist Equipment

Value for Money

Quality



Tinteán
Carlow Voluntary
Housing Association Ltd.



New Build

Purpose Built

2014

11 Blackbog Grove

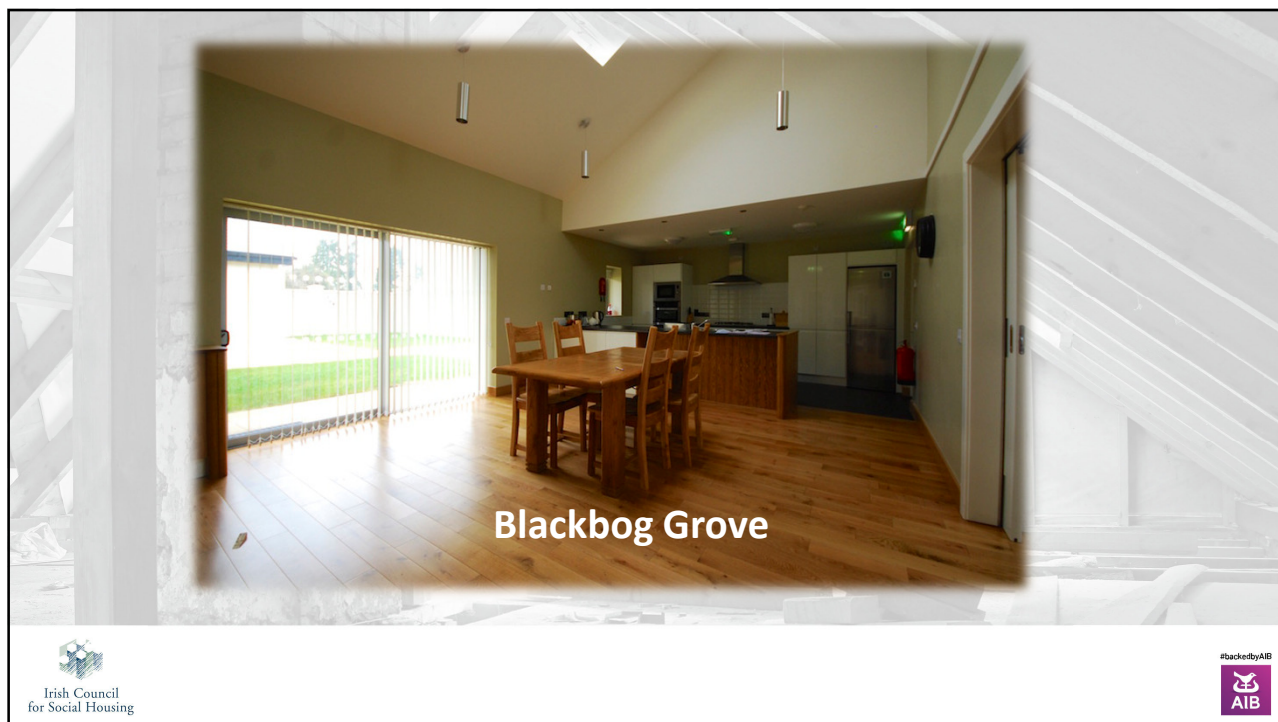
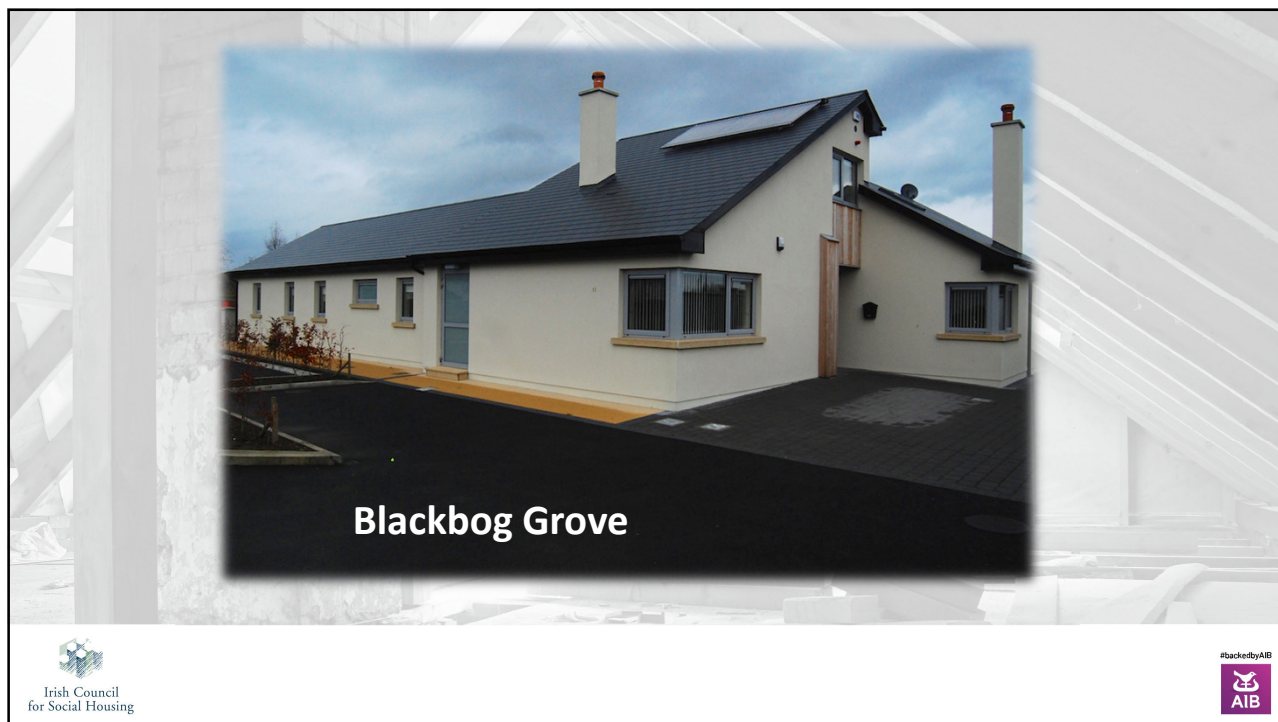
Up to 5 tenants

CAS Scheme



Tinteán
Carlow Voluntary
Housing Association Ltd.





New Build

Tinteán Carraig Phase 2

Passive House
First in sector

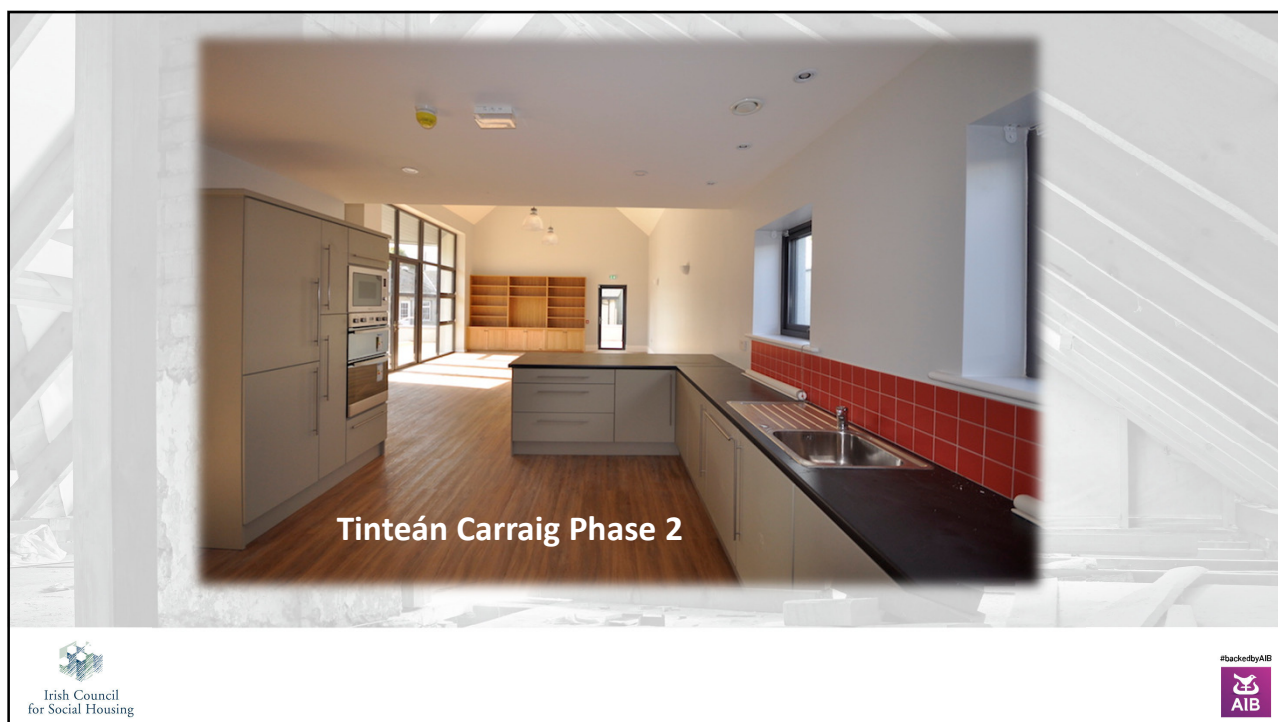
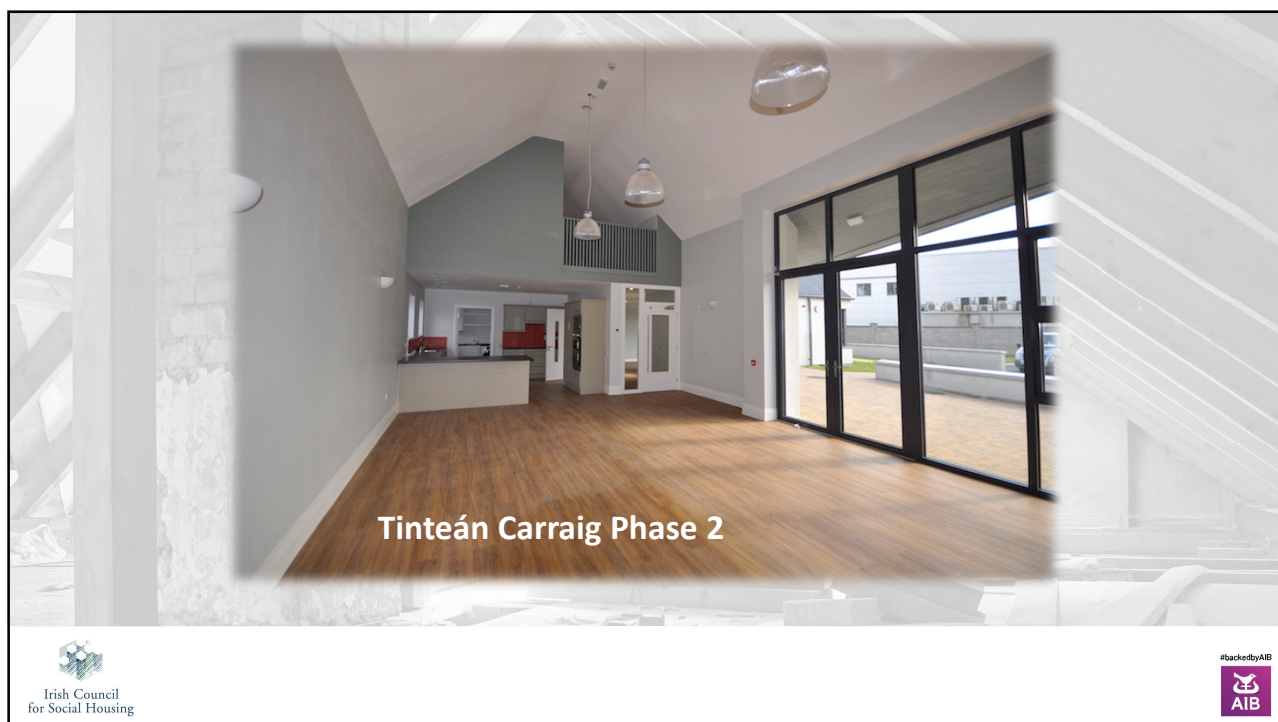


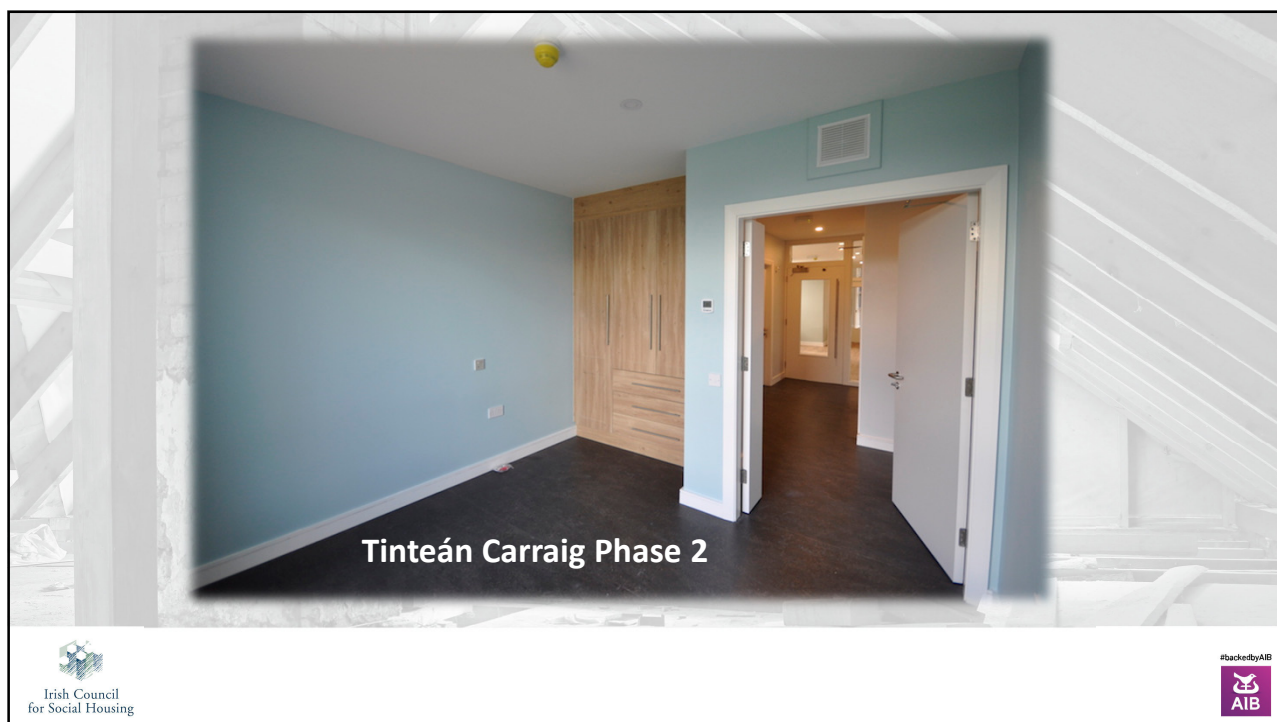
Tinteán
Carlow Voluntary
Housing Association Ltd.




Tinteán Carraig Phase 2







Housing Process



Tinteán
Carlow Voluntary
Housing Association Ltd.

Service Level Agreement with Delta Intellectual Disabilities

Delta waiting list from families and HSE referrals

Delta identifies individuals with severe and profound disability

- Massive change in need
- Failing health
- Death of parents / carer
- Carers no longer capable of caring
- Relocating from congregated settings

Delta prepares a business plan for HSE outlining needs of individuals to be housed

HSE letter of support for Tinteán before applying for CAS funding

Irish Council for Social Housing

#backedbyAIB AIB

Design



Tinteán
Carlow Voluntary
Housing Association Ltd.

HIQA standards
Occupational Therapist Reports

Consultations with tenants by Delta and the architect

- Bedroom colour schemes
- Window for Willie!
- 'Snoozling' facility in high support house, supported by Carlow Lions Club
- Family Information pack
- Tenant handbook Delta

Consultations with Community



Housing Process



Tinteán
Carlow Voluntary
Housing Association Ltd.

Carlow County Council

Families with special needs

- Bungalow accommodation
- Deteriorating health
- Accidents

Example: Sandhills

CAS funded



Why it works

Homes not mini institutions

Relationships

- Carlow County Council
- Department
- Delta
- Families
- HSE
- Community



Tinteán
Carlow Voluntary
Housing Association Ltd.



Impediments

HIQA requirements in terms of a person's home

- Signage
- Signing in and out
- Clustering
- Fire regulations

All homes are HIQA approved after first visits and awaiting registration



Tinteán
Carlow Voluntary
Housing Association Ltd.

What would help us?

Dedicated disability technical person
Faster turnaround times
Tracking system
Retention of housing practitioners at Council level



Tinteán
 Carlow Voluntary
 Housing Association Ltd.



Thank You!



Tinteán
 Carlow Voluntary
 Housing Association Ltd.





**Cllr Nick Killian
Chairperson
Housing Strategic Policy
Committee**

CLlr Nick Killian

Founder and Director

– Ratoath Independent Living Initiative

- 12 Apartments at Arkle House, Steeplechase, Ratoath



Director

– Ashbourne Care, Killegland, Ashbourne

- 12 small bungalows for elderly residents
- Planning to construct 3 bungalows – funded through CAS

Meath County Council

Housing Crisis:

- 4459 on Housing List
- Average of 33 families per week in Emergency Accommodation
- Direct Provision under construction at present = 16
- From 2015 Funding Allocation - 112 units to start construction in 2017
- Timelines too slow

Meath County Council

Social Housing Leasing Initiative (Approved Housing Bodies)

- 132 units approved for 2016

Housing Body	Location	Total Units
Cluid	Rathmoylon	9
	Ashbourne	67
	Navan	11
Túath	Drogheda	11
	Dunshaughlin	12
	Ballivor	12
		122

Meath County Council

Social Housing Leasing Initiative (Approved Housing Bodies)

- 75 operational units for 2016

Housing Body	Location	Total Units
North & East	Bettystown	18
Cluid	Mornington	25
	Navan	12
Oaklee	Navan	20
		75

